



STRUCTURAL CATALOGUE



TABLE OF CONTENTS

About us ----- **PAGE 3**

Reinforcement Accessories ----- **PAGE 4,5,6,7**

- Galvanized Wire
- Black Annealed Wire
- Concrete Spacers
- Plastic Wheel Spacer
- Shim plate

Accessories ----- **PAGE 8**

- Common Nail
- Concrete Nail
- High Rib Mesh

Formwork Systems

Form Tie Systems ----- **PAGE 9**

- D Formtie
- D Inner Unit
- Flat Rib Washer
- ½ Hex Nut
- Rubber Ring
- Dcone

Tie Rod Systems ----- **PAGE 10**

- Tie Rod
- Steel Cone
- Tie Nut
- Rubber Ring
- Pvc Pipe
- Pvc Cone

Form work Clamp ----- **PAGE 11**

Formwork ----- **PAGE 12**

- Plywood
- Timber

Foundation Works ----- **PAGE 13**

- Bakau Pile

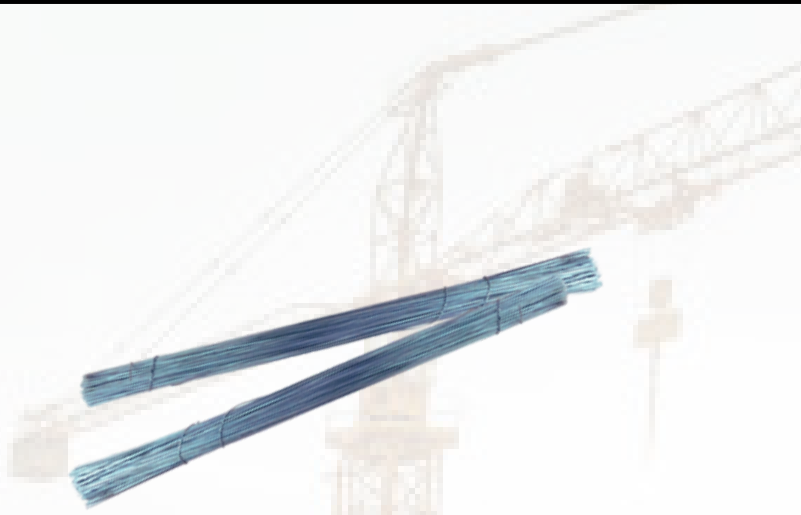
At **YTP Advance Corporation Pte Ltd**, we are committed to building the foundations of progress—literally. With years of experience in the construction materials industry, we provide high-quality, reliable, and innovative building materials that support projects of all sizes, from residential homes to large-scale commercial developments.

Our mission is to empower builders, architects, and contractors by supplying materials that combine durability, sustainability, and cost-efficiency. We pride ourselves on our extensive product range, all sourced and manufactured to meet the highest industry standards.

What sets us apart is our dedication to customer success. Our knowledgeable team works closely with clients to understand their project needs and deliver solutions that ensure structural integrity, efficiency, and lasting value.

At **YTP**, we don't just provide materials, we help construct dreams, strengthen communities, and build the future.

Galvanized Iron Wire



Galvanized Coil Wire is a high-quality mild steel wire coated with zinc to provide excellent corrosion resistance and long-lasting durability. Supplied in continuous coils, it offers flexibility for cutting and tying to required lengths on-site.

Widely used in construction, this wire is ideal for binding reinforcement bars (rebar), securing mesh, and general fastening applications. Its strong tensile strength and rust-resistant finish make it suitable for both indoor and outdoor environments, including humid and exposed conditions.

Precut Galvanized Wire is manufactured from high-quality steel wire that is cut to precise lengths and straightened for immediate use. Designed for efficiency, it eliminates the need for on-site cutting, helping to speed up construction work and reduce material waste.

Commonly used for tying reinforcement bars, this wire ensures consistent performance and uniform application across projects. It is especially suitable for large-scale construction where productivity and time-saving are essential.

ITEM DESCRIPTION	PACKAGING	
GALVANIZED COILWIRE SWG10/12/14/16	10KG/COIL	30 COIL/BUNDLE
GALVANIZED PRECUT WIRE 400MM/500MM	20KG/BOX	50 BOXES/PALLET

Black Annealed Wire



Black Annealed Wire is a high-quality steel wire that has been heat-treated through annealing to achieve superior softness and flexibility. Its ductile nature makes it easy to bend, twist, and tie without breaking, making it an essential material in construction, agriculture, and general fastening applications.

Commonly used for rebar tying, mesh fastening, fencing, and packaging, black annealed wire combines strength with workability, allowing for efficient and reliable use on-site. Supplied in coils, it provides convenience and flexibility for various projects

ITEM DESCRIPTION	PACKAGING	
BLACK ANNEALED WIRE 2.5MM/3.0MM	25 KG/COIL	15 COIL/BUNDLE
GALVANIZED PRECUT WIRE 500MM	20 KG/BOX	50 BOXES/PALLET

CONCRETE SPACERS



ITEM DESCRIPTION	PACKAGING	
25MM X 50MM X 50MM	250 PCS/BAG	40 BAGS/PALLET
30MM X 50MM X 50MM	250 PCS/BAG	40 BAGS/PALLET
35MM X 50MM X 50MM	200 PCS/BAG	40 BAGS/PALLET
40MM X 50MM X 50MM	200 PCS/BAG	40 BAGS/PALLET
50MM X 50MM X 50MM	150 PCS/BAG	40 BAGS/PALLET
60MM X 50MM X 50MM	100 PCS/BAG	40 BAGS/PALLET
75MM X 50MM X 50MM	100 PCS/BAG	40 BAGS/PALLET



Available in various odd sizes and different concrete grades. Please contact our sales team for inquiries and assistance

Concrete Spacers are essential construction accessories designed to maintain the correct cover between reinforcement bars (rebar) and the surface of concrete. They ensure that steel reinforcement is properly positioned, providing durability, structural integrity, and protection against corrosion.

Ideal for use in beams, slabs, columns, and walls, concrete spacers help achieve consistent concrete thickness and uniform coverage, ensuring the longevity of reinforced concrete structures. Available in various sizes and concrete grade, they can accommodate different rebar diameters and concrete thickness requirements.

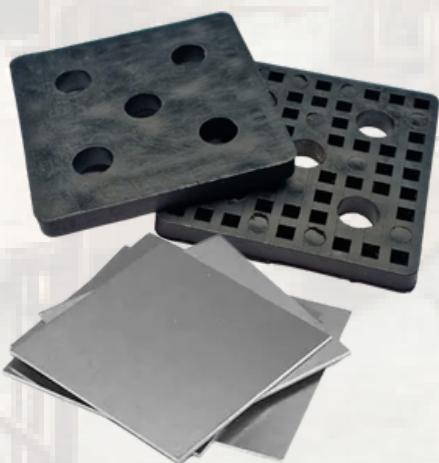
PLASTIC WHEEL SPACERS



ITEM DESCRIPTION	PACKAGING
PWS25	700 PCS/BAG
PWS35	500 PCS/BAG
PWS50	200 PCS/BAG
PWS60	150 PCS/BAG
PWS75	50 PCS/BAG

Plastic Wheel Spacers are durable, lightweight accessories designed to support reinforcement bars (rebar) at a uniform height during concrete pouring. They ensure precise concrete cover and proper positioning of steel reinforcement, contributing to structural integrity and long-lasting durability.

SHIM-PLATE

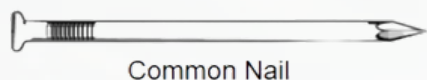


ITEM DESCRIPTION	PACKAGING
2MM X 50MM	500 PCS/BAG
3MM X 50MM	500 PCS/BAG
5MM X 50MM	500 PCS/BAG
10MM X 50MM	500 PCS/BAG

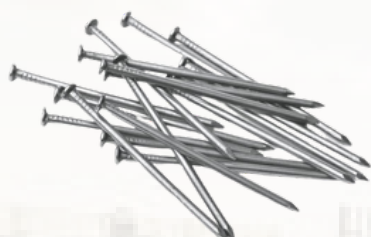
Available in galvanized steel and 25mm x 50mm

Shim Plates are precision-engineered construction accessories used in precast concrete applications to provide accurate leveling, alignment, and spacing between structural elements. They help ensure uniform gaps, maintain proper load distribution, and improve the quality and stability of precast components.

COMMON / CONCRETE NAIL



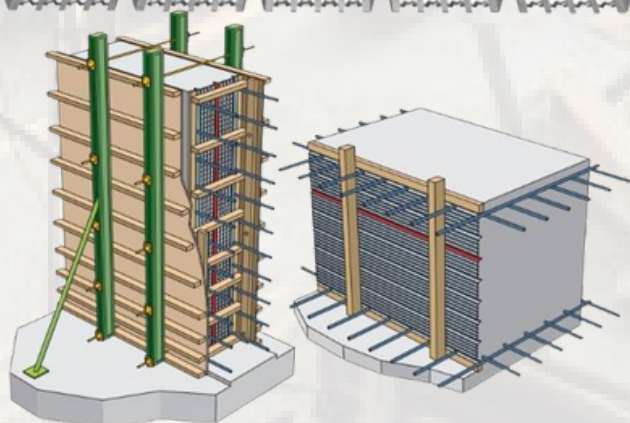
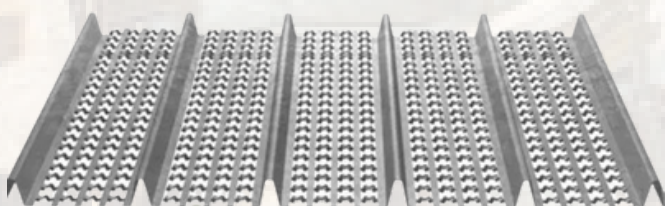
Common Nail



- **Common Nails** are versatile, high-strength fasteners widely used in construction, carpentry, and general building applications. Designed for secure joining of wood, timber, and other construction materials, they provide strong holding power and reliability for structural and non-structural work.
- **Concrete Nails** are specially designed high-strength steel nails used for fastening materials directly into concrete, masonry, or brick surfaces. Their hardened body and sharp, fluted or grooved design allow for secure penetration and superior holding power in hard substrates, making them essential for structural and finishing work.

ITEM DESCRIPTION	PACKAGING	
COMMON NAIL 1.5" / 2.0" / 2.5" / 3.0"	5 KG / BOX	224 BOXES / PALLET
CONCRETE NAIL 1.5" / 2.0" / 2.5"	500G / BOX	20 BOXES / PALLET

HIGH-RIB MESH



High Rib Mesh is a specially engineered expanded metal mesh designed to enhance the bonding strength between concrete pours. Featuring a unique ribbed structure with uniform openings, it acts as a permanent formwork and provides an excellent mechanical key for adjoining concrete surfaces.

ITEM DESCRIPTION	PACKAGING
450MM X 2200MM	10 PCS / BUNDLE

FORMTIE SYSTEM

The **D Form Tie System** is a reliable formwork accessory used in concrete construction to securely hold formwork panels in position during concrete pouring. Designed to maintain accurate wall thickness and alignment, it ensures stability and consistency in reinforced concrete structures.



Engineered for strength and efficiency, the system allows for easy installation and removal, helping to speed up construction processes while maintaining high safety standards. It is commonly used in walls, columns, and other vertical concrete structures.

ITEM DESCRIPTION	PACKAGING
D FORM TIE	50 PCS / BUNDLE
D INNER UNIT	50 PCS / BUNDLE
FLAT RIB WASHER 150MM X 50MM	100 PCS / BOX
½ HEX NUT	100 PCS / BAG
D12 RUBBER RING	100 PCS / BAG
D-CONE	200 PCS / BOX

TIE ROD SYSTEM



The **Tie Rod System** is a critical formwork component used in concrete construction to hold formwork panels securely in place during concrete pouring. It ensures accurate spacing, alignment, and stability of formwork, resulting in consistent wall thickness and high-quality concrete finishes.

Designed for strength and reusability, the system typically includes tie rods, wing nuts, and washer plates, providing a complete solution for efficient and safe formwork support. It is widely used in walls, columns, and large concrete structures.

ITEM DESCRIPTION	PACKAGING
TIE ROD	100 PCS / BUNDLE
STEELCONE 75MM / 100MM	50 PCS / BUNDLE
TIE NUT	50 PCS / BOX
RUBBER RING 17 MM	100 PCS / BAG
PVC PIPE 3.0M	100 PCS / BUNDLE
PVC CONE 25MM	1500 PCS / BAG

FORMWORK CLAMP



TENSIONAL CLAMP



Formwork clamps are efficient formwork accessories designed to quickly secure and align formwork panels during concrete pouring. Engineered for speed and ease of use, they allow for fast tightening and release, reducing labor time and improving overall construction efficiency.

Built from high-strength steel, rapid clamps provide reliable holding power and stability, ensuring proper alignment and consistent concrete finishes. They are widely used in wall formwork, column formwork, and other vertical concrete applications.

ITEM DESCRIPTION	PACKAGING
FORMWORK CLAMP	50 PCS / BAG
TENSIONAL CLAMP	1 PCS / BOX

PLYWOOD & TIMBER



Plywood and Timber are essential building materials widely used in construction for formwork, structural support, and general carpentry applications. They provide strength, versatility, and ease of handling, making them ideal for both temporary and permanent works.

Plywood offers a smooth, uniform surface that is especially suitable for concrete formwork, ensuring clean and consistent finishes.

Timber, known for its strength and durability, is commonly used for structural framing, supports, and bracing in construction projects.

ITEM DESCRIPTION	PACKAGING
PLYWOOD 12 MM	80 PCS / PALLET
PLYWOOD 18 MM	50 PCS / PALLET

ITEM DESCRIPTION	PACKAGING
2" X 1" X 8FT	450 PCS / TON
2" X 1" X 10FT	360 PCS / TON
2" X 1" X 12FT	300 PCS / TON
4" X 2" X 8FT	112 PCS / TON
4" X 2" X 10FT	90 PCS / TON
4" X 2" X 12FT	75 PCS / TON

“Plywood and Timber is available in a range of quality grades to suit different construction requirements. Please contact our sales team for detailed specifications and inquiries.”

BAKAU PILE



“ PICTURE FOR ILLUSTRATION PURPOSE ONLY”

BAKAU PILE are natural timber piles commonly used in construction for ground improvement and foundational support, particularly in soft soil conditions. Sourced from durable mangrove wood, they are known for their strength, resilience, and natural resistance to water, making them highly suitable for marine and wetland environments.

Widely used in foundation works, temporary structures, soil stabilization, and coastal construction, bakau piles provide reliable load distribution and improve ground bearing capacity. They are an economical and practical solution for projects requiring efficient piling in challenging ground conditions.

ITEM DESCRIPTION	PACKAGING
BAKAU PILE 3M	100 PCS / BUNDLE

“Actual sizes may vary, with diameters typically ranging between 50 mm and 75 mm due to natural characteristics.”



Y.T.P ADVANCE CORPORATION

***10 BUROH STREET #03-29 WEST CONNECT BUILDING
SINGAPORE 627564***

Your **T**rusted **P**artner